

SWING-THE NEW 12" A.C. MAIN TO EXISTING 6" C.I. MAIN. 6" X 6" TAPPING SLEEVE & VALVE (12" RT. C.I.) 6" VALVE BOX COMPLETE 6" 1/4" BEND, M.J. 12" X 6" TEE, RTJ, X.M.J. ANCHOR 10' 2" - 6" C.I. PIPE

CUT & PLUG EXISTING 2" C.I. MAIN AFTER TRANSFER OF SERVICES

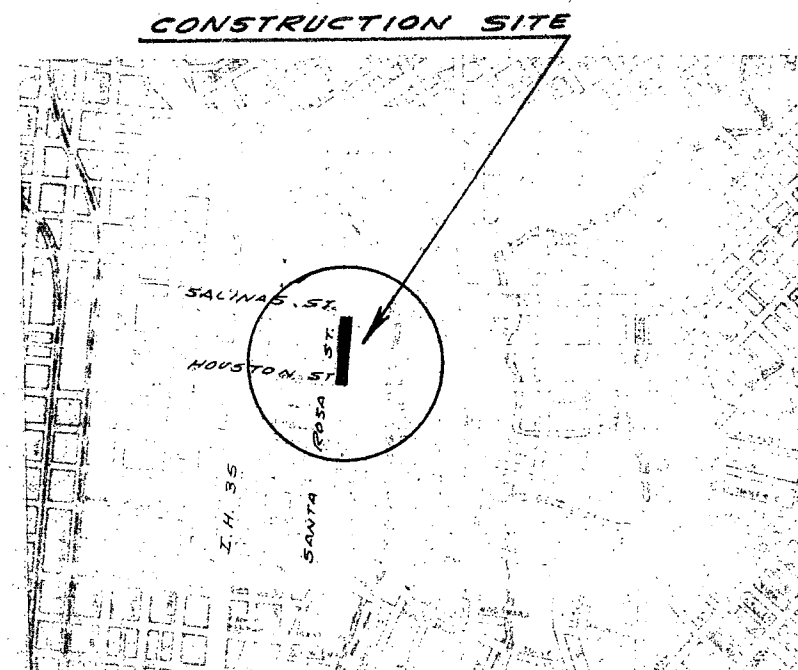
CUT & PLUG EXISTING 6" X 1/2" TEE & SALVAGE EXISTING FIRE HYDRANT AFTER NEW MAIN HAS BEEN RELEASED FOR SERVICE. SOLID PLUG, L.O. JT.

SCALE: 1"=20'

GENERAL NOTES:

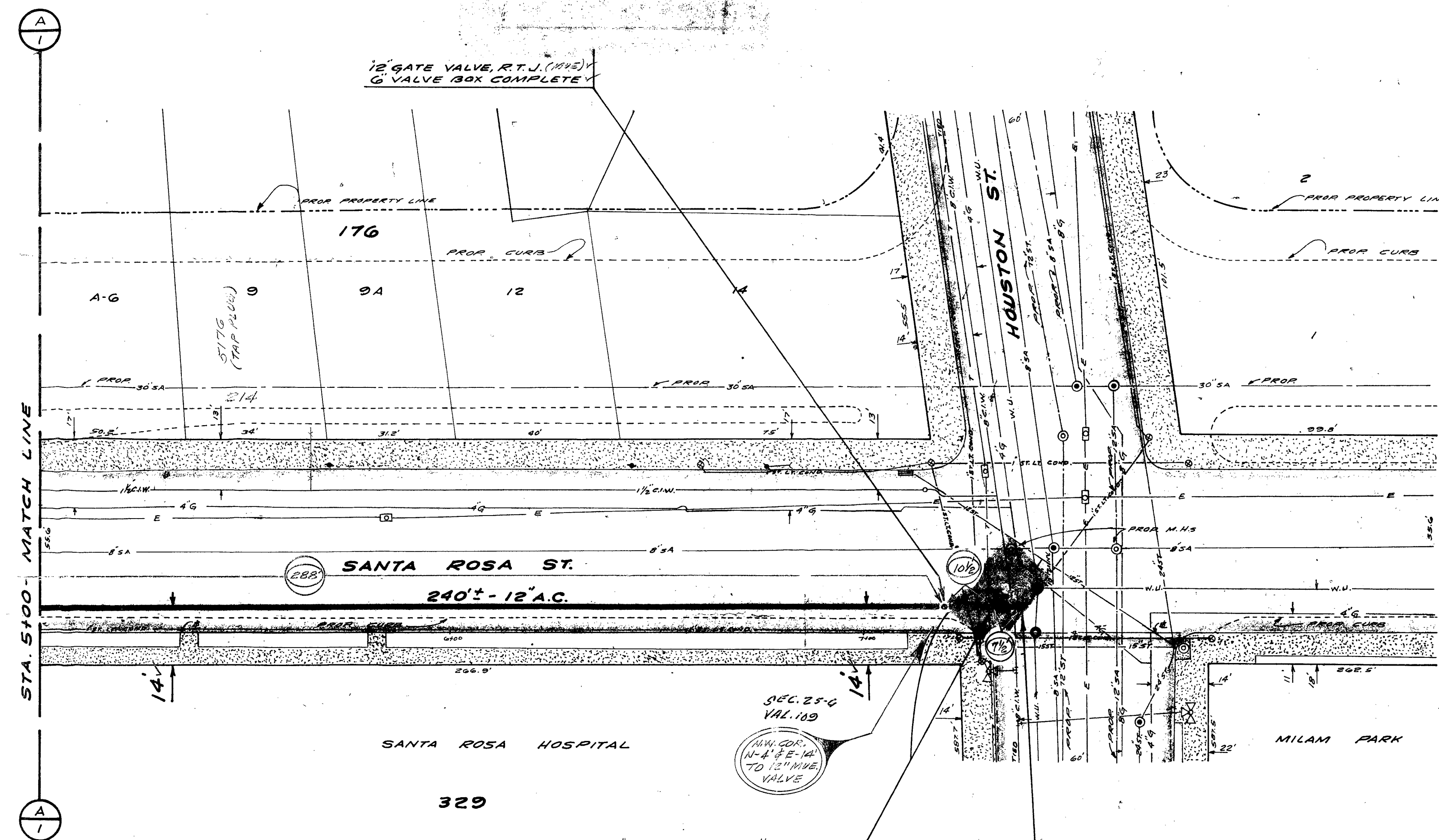
- CONTRACTOR SHALL RELAY AND/OR RECONNECT EXISTING SERVICES IN SANTA ROSA ST. TO NEW 12" A.C. MAIN AFTER NEW MAIN HAS BEEN RELEASED FOR SERVICE.
- CONTRACTOR SHALL ABANDON EXISTING 2" C.I. MAIN IN SANTA ROSA ST. AFTER SERVICES HAVE BEEN TRANSFERRED TO NEW 12" A.C. MAIN.
- CONTRACTOR SHALL CONTACT TELEPHONE COMPANY, CA 2-3288 FOR LOCATION OF TELEPHONE CONDUIT IN AREA.
- CONTRACTOR SHALL CONTACT MR. BENSCHOLL, CA 7-3211 FOR LOCATION OF ELECTRICAL CONDUIT IN AREA.
- CONTRACTOR SHALL CONTACT MR. HENDRIK, CA 4-8851 FOR LOCATION OF WESTERN UNION CONDUIT IN AREA.
- CONTRACTOR SHALL CONTACT MR. ROBERT HANN, CA 5-5661 FOR INVERT OF PROP. 12" STORM SEWER MAIN IN HOUSTON ST.
- C.W.B. TO DISINFECT NEW MAIN BY MACHINE CHLORINATION.

LEGEND			
PROP. WATER MAIN	6" C.I.W.		
EXIST. WATER MAIN	4" G		
GAS MAINS	8" SA		
SANITARY SEWERS	30" ST		
STORM SEWERS			
UTILITY POLE LINE			
ELECTRIC CABLE			
TELEPHONE CABLE			
RESISTIVITY READINGS			
SERVICE RECONNECTS:			
3/4"			
1" OR LARGER			
SERVICE RELAYS:			
3/4"			
1" OR LARGER			
SERVICE RELOCATES:			
3/4"			
1" OR LARGER			



SITE DIAGRAM

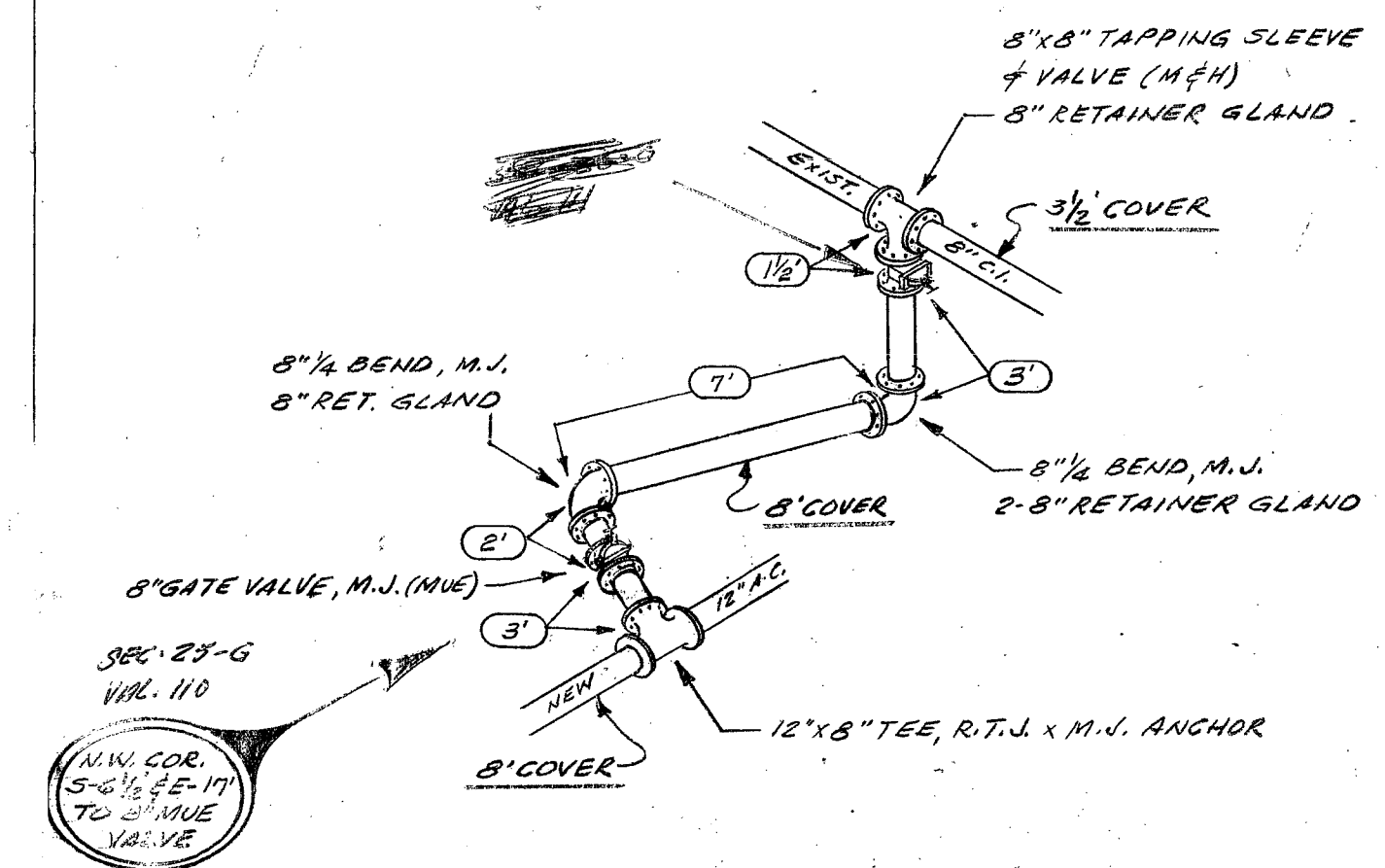
NO.	REVISION	DRAWN	APPROVED	DATE
REVISIONS				
CONT.		DEVELOPER		
MAP No. 291		SECTION No. 25		
JOB No. 5176		SHEET 1 OF 2		
CITY WATER BOARD SAN ANTONIO, TEXAS				
SANTA ROSA ST. BETWEEN SALINAS ST. & HOUSTON ST.				
CODE E-1183 BUDGET PROJECT 12,24,27				
DRAWN		CHECKED		
SUBMITTED				
APPROVED				
DATE				



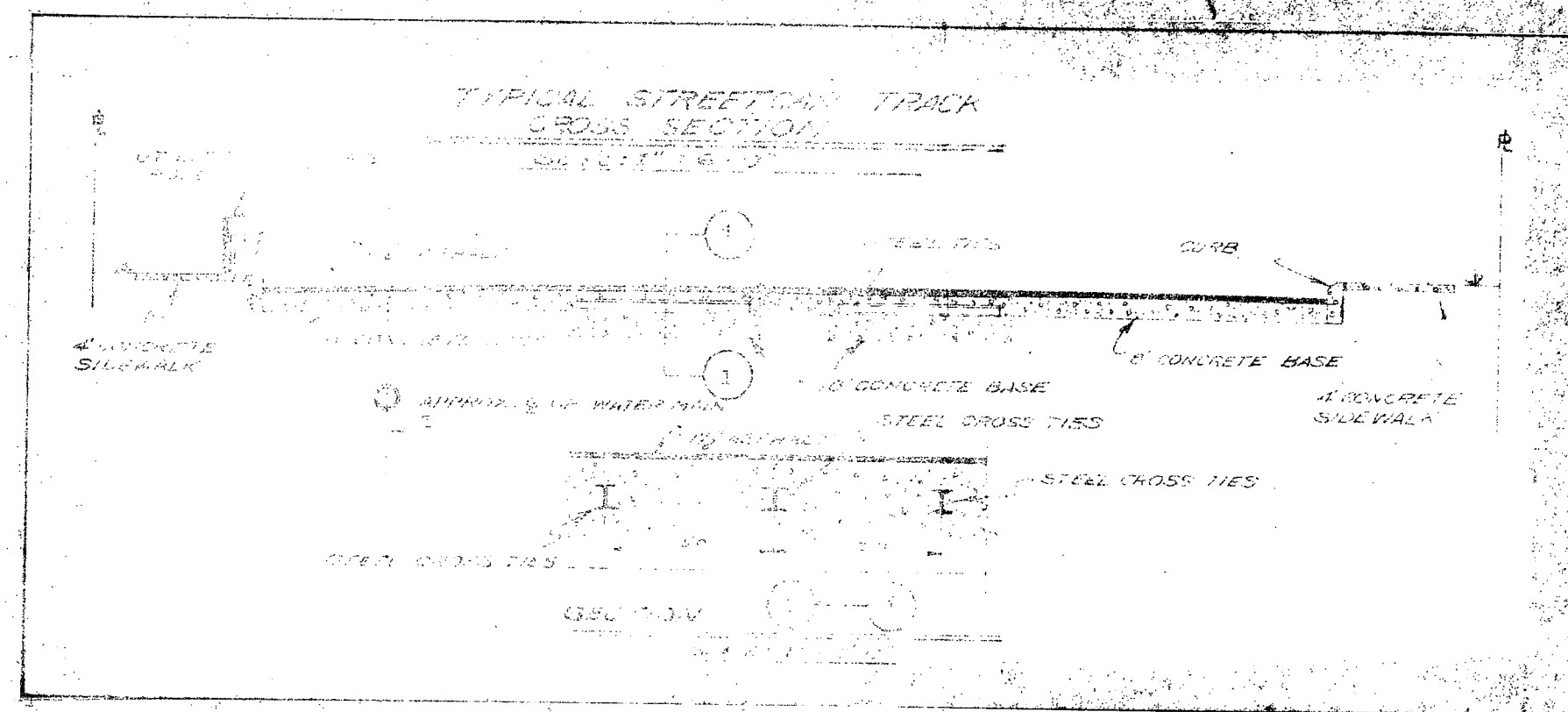
"SEE DETAIL"
 TIE NEW 12" A.C. MAIN TO
 EXISTING 8" CI. MAIN: V
 8"x8" TAPPING SLEEVE &
 VALVE (TO FIT C.I.) (M.H.) V
 2-8" BENDS, M.H. V
 2-8" RETAINER GLANDS V
 12"x8" TEE, R.T.J. x M.H. ANCHOR V
 8" GATE VALVE, M.H. (M.V.) V
 6" VALVE BOX, COMPLY V

12"x3/4" TAPPED CAP, R.T.J. V
 (TAP ON TOP) V
 3/4" CORR STOP, I.R. CO. V
 3/4" COPPER DISC V

SEC. 25-G
 VAL. 110
 12" A.C. MAIN
 TO 8" VALVE



DETAIL OF TIE-IN AT
 HOUSTON & SANTA ROSA
 NO SCALE



STREET CAR TRACKS
 AT
 HOUSTON ST. & SANTA ROSA ST.

SCALE: 1"=20'



SHEET 2 OF 2	
CITY WATER BOARD SAN ANTONIO, TEXAS	
SANTA ROSA ST. BETWEEN SALINAS & HOUSTON ST.	
CODE E-1183	BUDGET PROJECT 12,24 & 27
DRAWN <i>[Signature]</i>	CHECKED <i>[Signature]</i>
SUBMITTED <i>[Signature]</i>	APPROVED <i>[Signature]</i>
DATE 14 Feb 1989	

