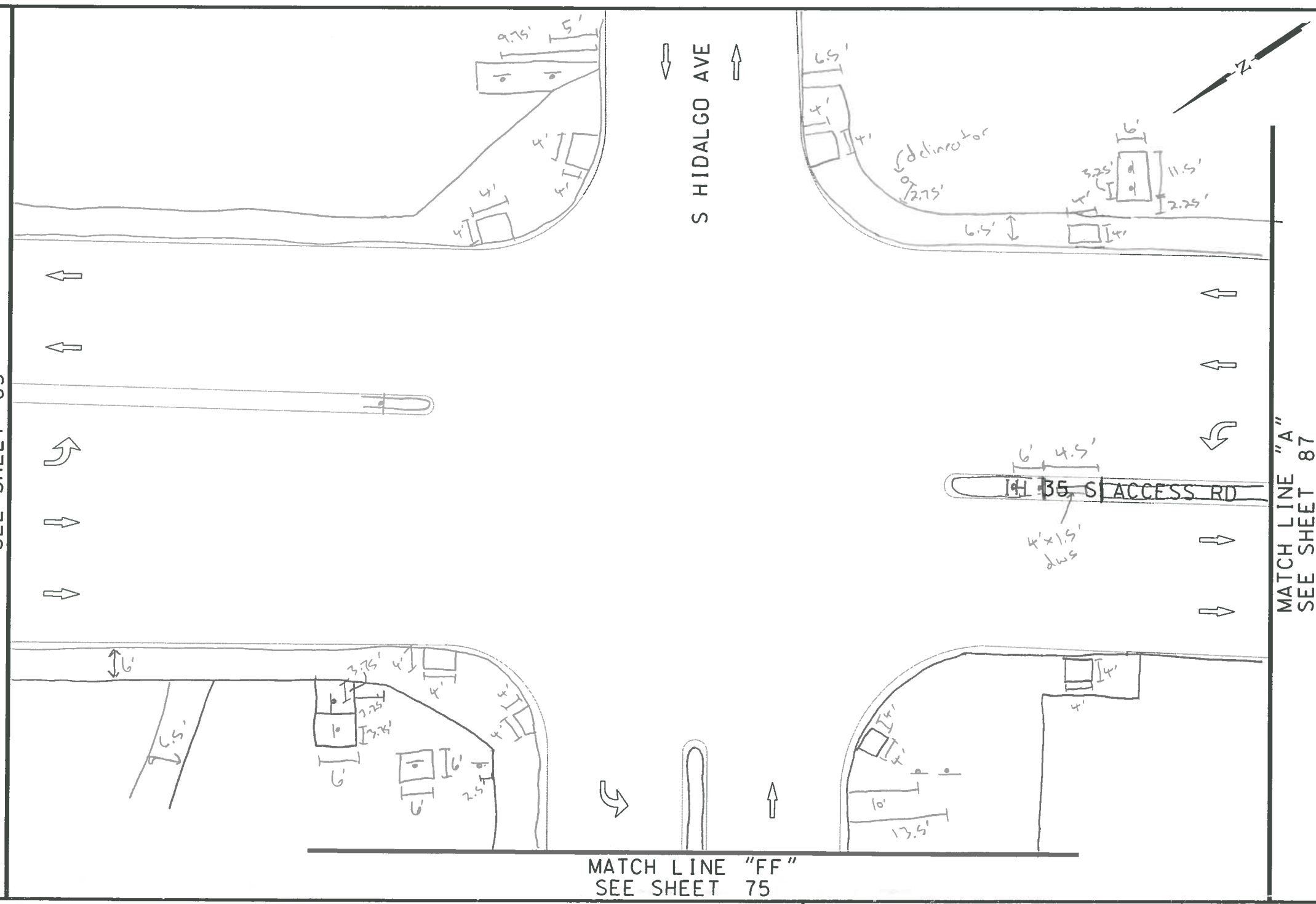


PLOTTED DN: 10/31/2016

DESIGN FILENAME: P:\111\*38\*00\*Design\Civil\*Roadway\1113800\_NB\_IH\_35\_SBFR\_SheetA.dgn

MATCH LINE "11"  
SEE SHEET 85

MATCH LINE "A"  
SEE SHEET 87



ITEM	DESCRIPTION	UNIT	QTY
------	-------------	------	-----



NB\_16-025\_WS\_50

CF 4/1  
DC

NOTES:

- \* FOR CONTRACTOR INFORMATION ONLY
- 1. THE EXISTENCE AND LOCATION OF ALL UTILITIES AND DRAINAGE STRUCTURES INDICATED IN THE PLANS ARE TAKEN FROM THE BEST RECORDS AVAILABLE AND ARE NOT GUARANTEED TO BE ACCURATE. CONTRACTOR SHALL COORDINATE WITH ALL UTILITY COMPANIES TO FIELD VERIFY UTILITIES PRIOR TO BEGINNING CONSTRUCTION.

DESIGN	
INTERIM REVIEW	
DOCUMENT INCOMPLETE. NOT INTENDED FOR PERMIT, BIDDING OR CONSTRUCTION.	
ENGINEER: JOHN A. TYLER	
P.E. SERIAL NO: 105193	
DATE: 10/31/2016	

REVIEW AND APPROVAL	
INTERIM REVIEW	
DOCUMENT INCOMPLETE. NOT INTENDED FOR PERMIT, BIDDING OR CONSTRUCTION.	
ENGINEER: JAMES A. LUTZ	
P.E. SERIAL NO: 84722	
DATE: 10/31/2016	

NOT TO SCALE			
REV. NO.	DATE	DESCRIPTION	BY

SPECIAL NOTES & DETAILS

FOR ENVIRONMENTAL REVIEW ONLY

LEGEND

- |                            |                           |                           |
|----------------------------|---------------------------|---------------------------|
| CAMERA POSITION            | LIGHT POLE                | TRAFFIC FLOW              |
| DRAINAGE FLOW ARROW        | LUMINAIRE STANDARD        | TRAFFIC SIGNAL BOX        |
| FLARE                      | MAIL BOX                  | TRAFFIC SIGNAL CONTROLLER |
| FIRE HYDRANT               | MANHOLE                   | TRAFFIC SIGNAL POLE       |
| GAS METER                  | NSPI NO SEPARATE PAY ITEM | TRANSFORMER               |
| GAS VALVE                  | PEDESTAL SIGNAL POLE      | TREE/BUSHES               |
| GROUND BOX                 | PI POINT                  | UTILITY PEDESTAL/MARKER   |
| GUY ANCHOR                 | POWER/UTILITY POLE        | UTILITY VAULT             |
| IRRIGATION                 | R RAMP                    | WATER METER               |
| JUNCTION BOX               | RR RIPRAP (CONC)          | WATER VALVE               |
| L LANDING                  | SIGN                      |                           |
| L1 LANDING (COMMON)        | SODDING                   |                           |
| LS LEVEL SIDEWALK (2% MAX) | T TRANSITION              |                           |

**PAPE-DAWSON ENGINEERS**  
 SAN ANTONIO | AUSTIN | HOUSTON | FORT WORTH | DALLAS  
 2000 NW LOOP 410 | SAN ANTONIO, TX 78213 | 210.375.9000  
 TBPE FIRM REGISTRATION #470 | TBPLS FIRM REGISTRATION #10028800

Texas Department of Transportation  
 © 2016

CURB RAMP PROGRAM

IH 35 SBFR  
 SIDEWALK SHEET A

SHEET 1 OF 15				
DWG:	FED. RD. DIV. NO.:	STATE:	CITY:	HIGHWAY NO.:
	6	TEXAS	NEW BRAUNFELS	VA
DWG:	DIST. COUNTY:	CONT. NO.:	SECT. NO.:	JOB NO. SHEET NO.:
	SAT COMAL			