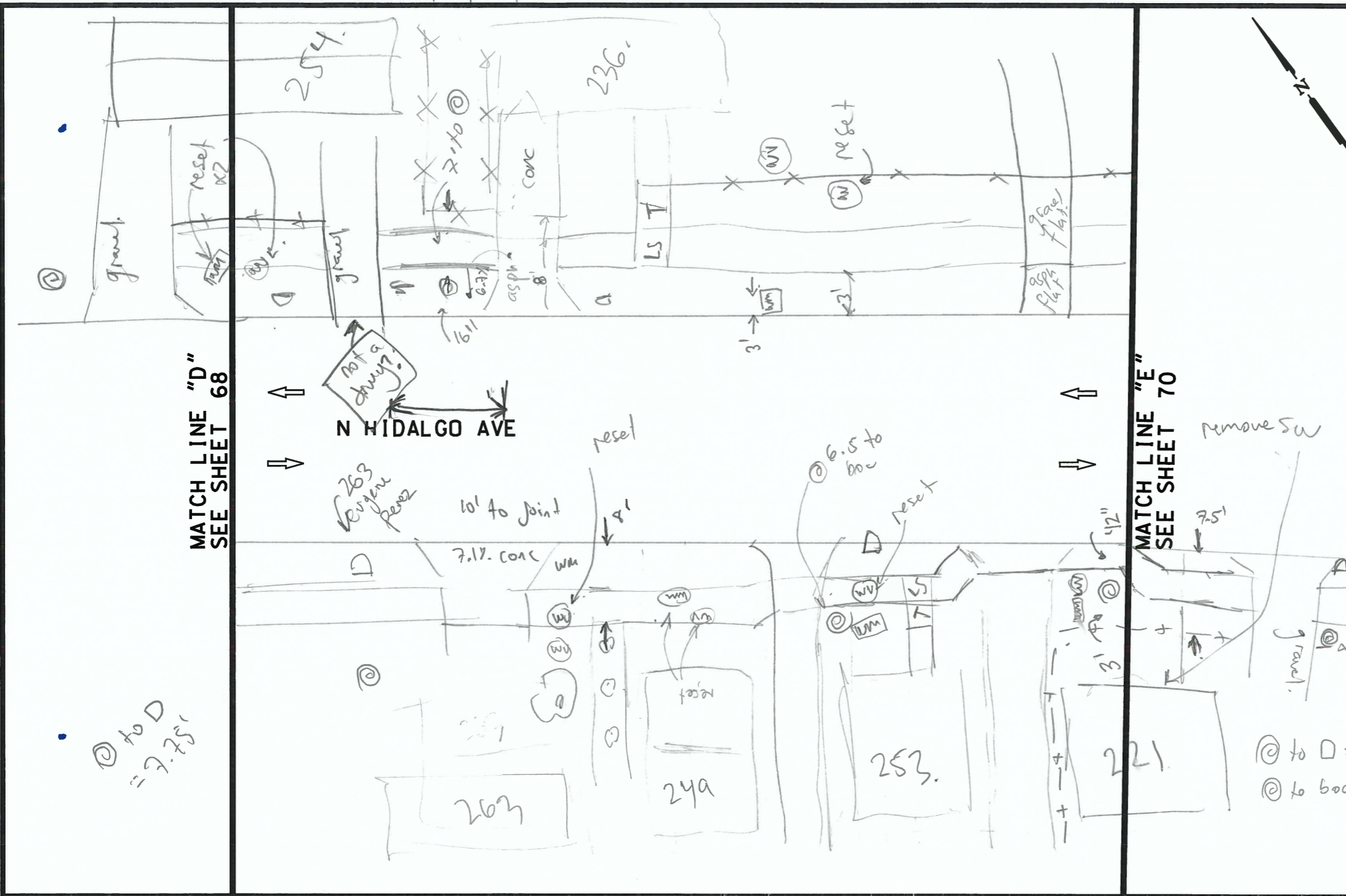


PLOTTED ON: 10/28/2016

DESIGN FILENAME: P:\11\338\00\Design\Civil\Roadway\113800\_NB\_HidalgoAve\_SheetE.dgn



ITEM	DESCRIPTION	UNIT	QTY
------	-------------	------	-----



NB\_16-025\_WS\_33

Ann 11/3/16  
FD

- NOTES:
- \* FOR CONTRACTOR INFORMATION ONLY
  - 1. THE EXISTENCE AND LOCATION OF ALL UTILITIES AND DRAINAGE STRUCTURES INDICATED IN THE PLANS ARE TAKEN FROM THE BEST RECORDS AVAILABLE AND ARE NOT GUARANTEED TO BE ACCURATE. CONTRACTOR SHALL COORDINATE WITH ALL UTILITY COMPANIES TO FIELD VERIFY UTILITIES PRIOR TO BEGINNING CONSTRUCTION.

**INTERIM REVIEW**  
DOCUMENT INCOMPLETE. NOT INTENDED FOR PERMIT, BIDDING OR CONSTRUCTION.  
ENGINEER: JOHN A. TYLER  
P.E. SERIAL NO: 105193  
DATE: 10/28/2016

**INTERIM REVIEW**  
DOCUMENT INCOMPLETE. NOT INTENDED FOR PERMIT, BIDDING OR CONSTRUCTION.  
ENGINEER: JAMES A. LUTZ  
P.E. SERIAL NO: 84722  
DATE: 10/28/2016

NOT TO SCALE

REV. NO.	DATE	DESCRIPTION	BY



SAN ANTONIO | AUSTIN | HOUSTON | FORT WORTH | DALLAS  
2000 NW LOOP 410 | SAN ANTONIO, TX 78213 | 210.375.9000  
TPOE FIRM REGISTRATION #470 | TBPES FIRM REGISTRATION #10028600



CURB RAMP PROGRAM

### HIDALGO AVE SIDEWALK SHEET E

SHEET 5 OF 1

DIST.	FED. RD. DIV. NO.	STATE	CITY	HIGHWAY I	
SAT	6	TEXAS	NEW BRAUNFELS	VA	
DIST.	COUNTY	CONT. NO.	SECT. NO.	JOB NO.	SHEET NO.
SAT	COMAL				69

#### SPECIAL NOTES & DETAILS

FOR ENVIRONMENTAL REVIEW ONLY

#### LEGEND

- |                            |                           |   |
|----------------------------|---------------------------|---|
| CAMERA POSITION            | LIGHT POLE                | LONGITUDINAL SLOPES MAY NOT EXCEED 5%. CROSS SLOPES MAY NOT EXCEED 2% |
| DRAINAGE FLOW ARROW        | LUMINAIRE STANDARD        | TRAFFIC FLOW  |
| FLARE                      | MAIL BOX                  | TRAFFIC SIGNAL BOX  |
| FIRE HYDRANT               | MANHOLE                   | TRAFFIC SIGNAL CONTROLLER   |
| GAS METER                  | NSPI NO SEPARATE PAY ITEM | TRAFFIC SIGNAL POLE   |
| GAS VALVE                  | PEDESTAL SIGNAL POLE      | TRANSFORMER   |
| GROUND BOX                 | PI POINT                  | TREE/BUSHES   |
| GUY ANCHOR                 | POWER/UTILITY POLE        | UTILITY PEDESTAL/MARKER   |
| IRRIGATION                 | RAMP                      | UTILITY VAULT   |
| JUNCTION BOX               | RR RIPRAP (CONC)          | WATER METER   |
| LANDING                    | SIGN                      | WATER VALVE   |
| L1 LANDING (COMMON)        | SODDING                   |   |
| LS LEVEL SIDEWALK (2% MAX) | T TRANSITION              |   |