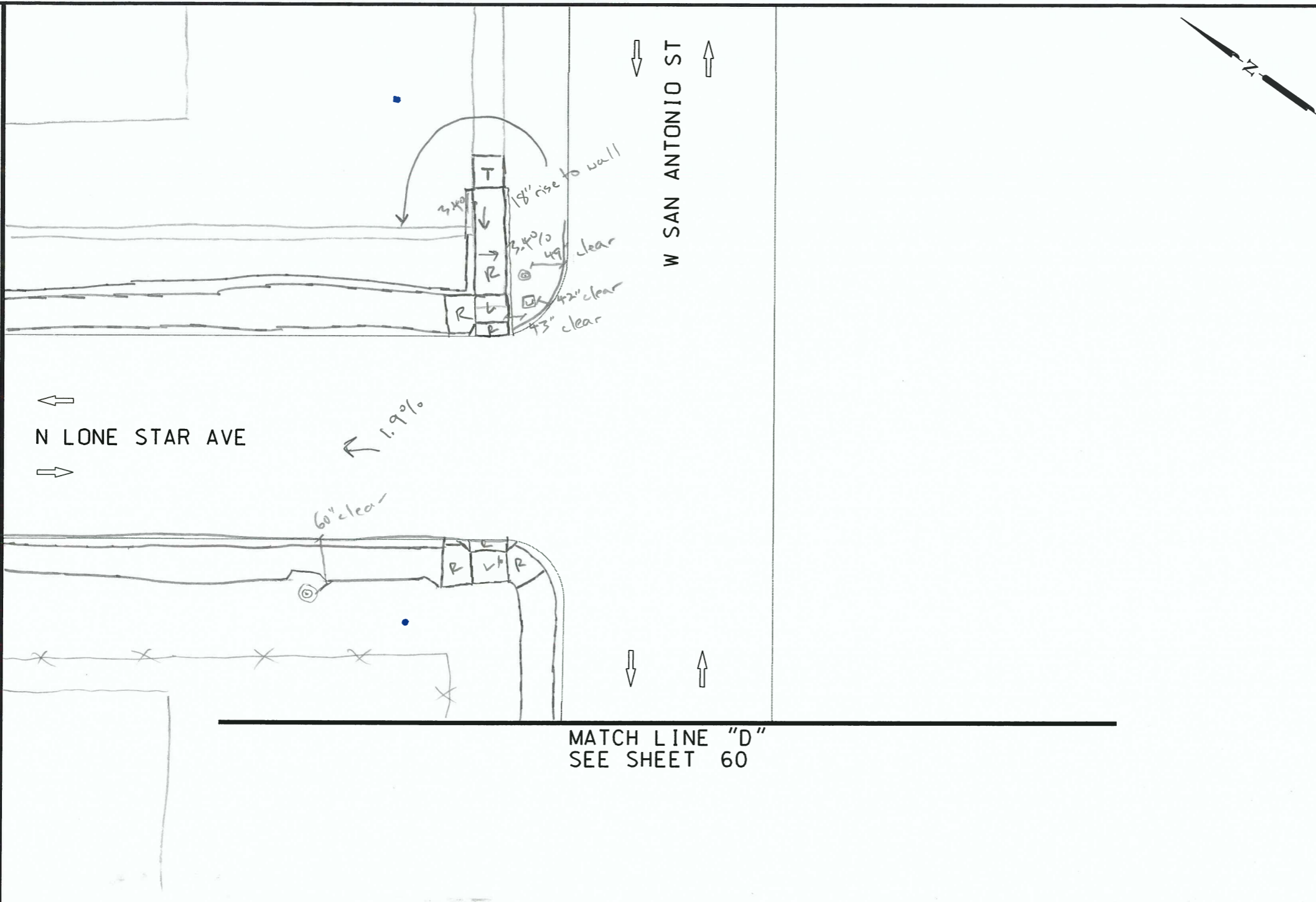


PLOTTED ON: 10/31/2016

DESIGN FILENAME: P:\111\38\00\Design\Civil\Roadway\1113800\_NB\_LoneStarAve\_SheetD.dgn

MATCH LINE "C"  
SEE SHEET 58



MATCH LINE "D"  
SEE SHEET 60

SPECIAL NOTES & DETAILS

FOR ENVIRONMENTAL REVIEW ONLY

LEGEND

- CAMERA POSITION
- LIGHT POLE
- LONGITUDINAL SLOPES MAY NOT EXCEED 5%, CROSS SLOPES MAY NOT EXCEED 2%
- DRAINAGE FLOW ARROW
- LUMINAIRE STANDARD
- FLARE
- MAIL BOX
- FIRE HYDRANT
- MANHOLE
- GAS METER
- NSPI NO SEPARATE PAY ITEM
- GAS VALVE
- PEDESTAL SIGNAL POLE
- GROUND BOX
- PI POINT
- GUY ANCHOR
- POWER/UTILITY POLE
- IRRIGATION
- R RAMP
- JUNCTION BOX
- RR RIPRAP (CONC)
- L LANDING
- SIGN
- L1 LANDING (COMMON)
- SODDING
- LS LEVEL SIDEWALK (2% MAX)
- T TRANSITION
- TRAFFIC FLOW
- TRAFFIC SIGNAL BOX
- TRAFFIC SIGNAL CONTROLLER
- TRAFFIC SIGNAL POLE
- TRANSFORMER
- TREE/BUSHES
- UTILITY PEDESTAL/MARKER
- UTILITY VAULT
- WATER METER
- WATER VALVE

ITEM	DESCRIPTION	UNIT	QTY
------	-------------	------	-----



NB\_16-025\_WS\_23

CF 11/4  
FD

NOTES:

- \* FOR CONTRACTOR INFORMATION ONLY
- 1. THE EXISTENCE AND LOCATION OF ALL UTILITIES AND DRAINAGE STRUCTURES INDICATED IN THE PLANS ARE TAKEN FROM THE BEST RECORDS AVAILABLE AND ARE NOT GUARANTEED TO BE ACCURATE. CONTRACTOR SHALL COORDINATE WITH ALL UTILITY COMPANIES TO FIELD VERIFY UTILITIES PRIOR TO BEGINNING CONSTRUCTION.

INTERIM REVIEW  
DOCUMENT INCOMPLETE. NOT INTENDED FOR PERMIT, BIDDING OR CONSTRUCTION.  
ENGINEER: JOHN A. TYLER  
P.E. SERIAL NO: 105193  
DATE: 10/31/2016

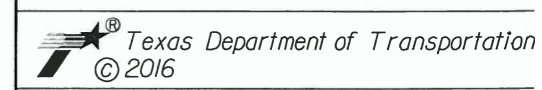
REVIEW AND APPROVAL  
INTERIM REVIEW  
DOCUMENT INCOMPLETE. NOT INTENDED FOR PERMIT, BIDDING OR CONSTRUCTION.  
ENGINEER: JAMES A. LUTZ  
P.E. SERIAL NO: 84722  
DATE: 10/31/2016

NOT TO SCALE

REV. NO.	DATE	DESCRIPTION	BY



SAN ANTONIO | AUSTIN | HOUSTON | FORT WORTH | DALLAS  
2000 NW LOOP 410 | SAN ANTONIO, TX 78213 | 210.375.9000  
TBPE FIRM REGISTRATION #470 | TBPLS FIRM REGISTRATION #10028800



CURB RAMP PROGRAM

LONE STAR AVE  
SIDEWALK SHEET D

SHEET 4 OF 9

CHK DGN:	FED. RD. DIV. NO.:	STATE:	CITY:	HIGHWAY NO.:		
	6	TEXAS	NEW BRAUNFELS	VA		
CHK DGN:	DIST.:	COUNTY:	CONT. NO.:	SECT. NO.:	JOB NO.:	SHEET NO.:
	SAT	COMAL				59