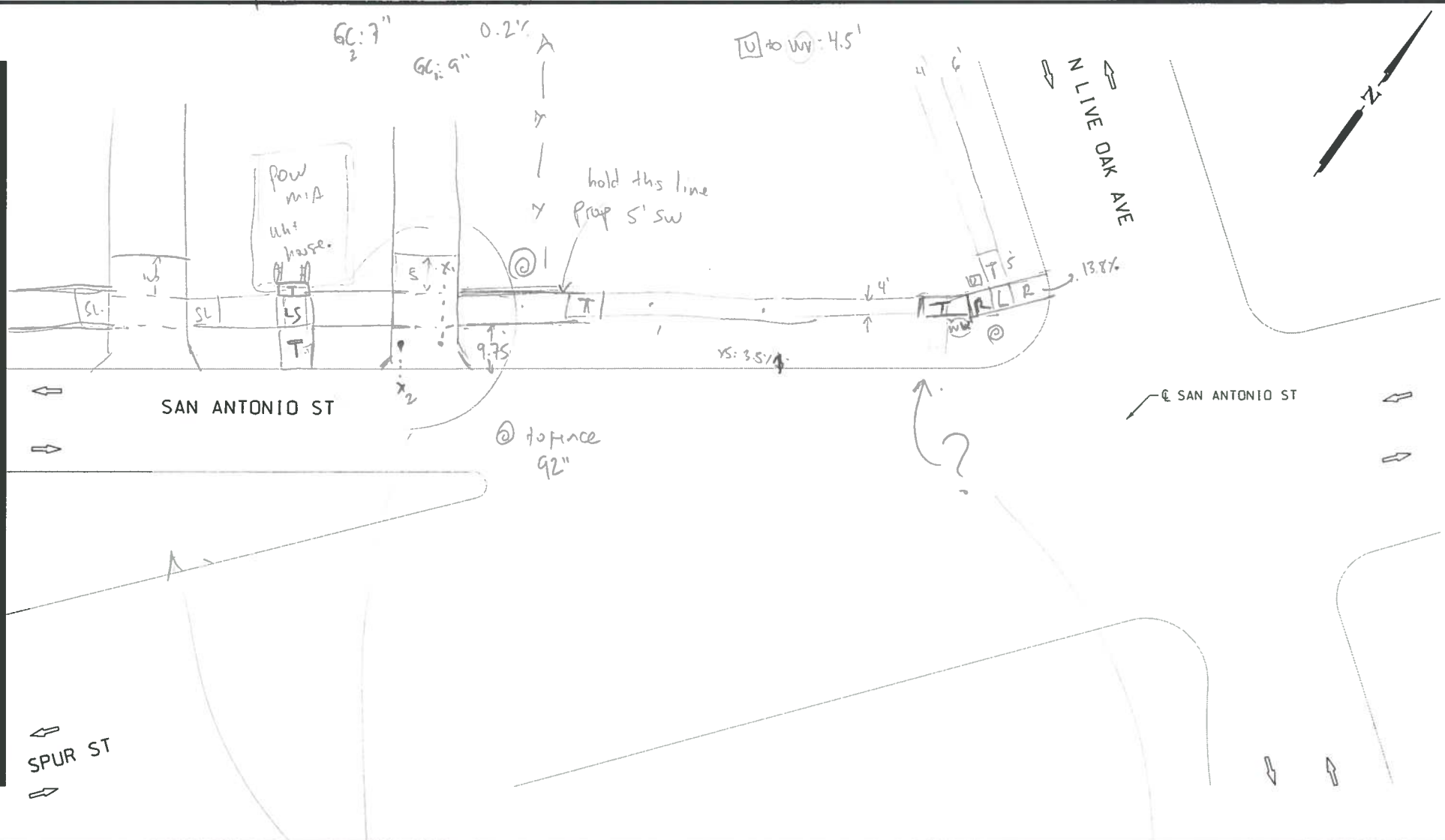


PLOTTED ON: 10/31/2016

DESIGN FILENAME: P:\111\38\01\Design\Civil\Roadway\1113801_SanAntonioSt_15.dgn

MATCH LINE STA

MATCH LINE STA



ITEM	DESCRIPTION	UNIT	QTY
------	-------------	------	-----

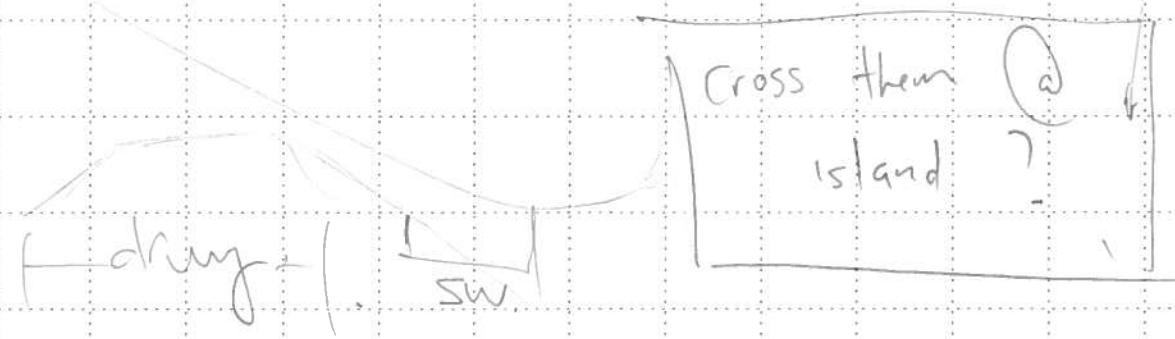
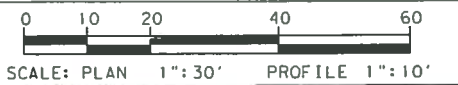
Amw
FD
11/7



NB_15-054_SA_15

DESIGN
INTERIM REVIEW
DOCUMENT INCOMPLETE. NOT INTENDED FOR PERMIT, BIDDING OR CONSTRUCTION.
ENGINEER: JOHN A. TYLER
P.E. SERIAL NO: 105193
DATE: 10/31/2016

REVIEW AND APPROVAL
INTERIM REVIEW
DOCUMENT INCOMPLETE. NOT INTENDED FOR PERMIT, BIDDING OR CONSTRUCTION.
ENGINEER: JAMES A. LUTZ
P.E. SERIAL NO: 84722
DATE: 10/31/2016



REV. NO.	DATE	DESCRIPTION	BY
----------	------	-------------	----

Pape-Dawson ENGINEERS
SAN ANTONIO | AUSTIN | HOUSTON | FORT WORTH | DALLAS
2000 HW LOOP 410 | SAN ANTONIO, TX 78213 | 210.375.9000
TDD & 410 PROHEAT BLVD, SUITE 100, AUSTIN, TX 78746



HIGHWAY
SAN ANTONIO ST
STA XXX+XX TO END PROJECT
SHEET 15 OF 15

CHK DGN:	FED. RD. DIV. NO.	STATE	PROJECT NO.	HIGHWAY NO.
CHK DGN:	6	TEXAS		VA
CHK DWG:	DIST.	COUNTY	CONT. NO.	SECT. NO.
CHK DWG:	SAT	COMAL		