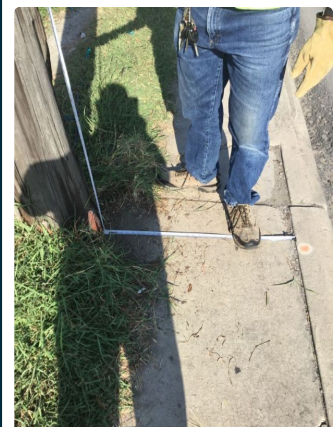
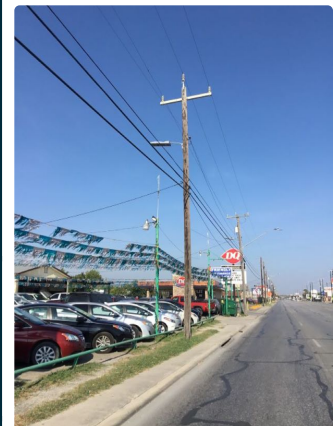




Utility Conflict Report

OWNER	Utility	CPS	Corridor	SW MILITARY	SITE PHOTOS
	Contact	JAKE MARTINEZ	ID	4118	
GENERAL INFO	Utility	ELECTRIC			
	Size and Material	STANDARD POWER POLE, TIMBER			
	Accessible Route	ASSET IS INSIDE ACCESSIBLE ROUTE			
	Longitudinal or Crossing	CROSSING			
	Placement Relative to ROW	INSIDE ROW			
LOCATION	Sheet No.	135			
	Station	560+94.65			
	Offset	15.23			
	Latitude	+29.357315			
	Longitude	-98.55073			
SUE	Level of Investigation Req'd	NONE			
	Test Hole No	N/A			
	Test Hole Depth	N/A			
RESOLUTION	Recommended Action	ACCOMMODATE - RELOCATION			
	Estimated Resolution Date				
	Resolution Status	UTILITY OWNER INFORMED OF UTILITY			
	Comment	Pole ID: LA1785410 Pole to back of curb = 2'-10" Sidewalk width = 3'-0" Pole to steel rail = 2'-4" Relocate pole to ROW with electric lines cantilevered toward the roadway			
Date Collected		7/27/2018 9:13:42 AM		Date Modified	11/21/2018 2:51:37 PM



TBPE Firm Registration #470 | TBPLS Firm Registration #10028800

San Antonio | Austin | Houston | Fort Worth | Dallas

Transportation | Water Resources | Land Development | Surveying | Environmental

2000 NW Loop 410, San Antonio, TX 78213 T: 210.375.9000 www.Pape-Dawson.com